

1 μ m

Mag = 8.00 K X

EHT = 5.00 kV

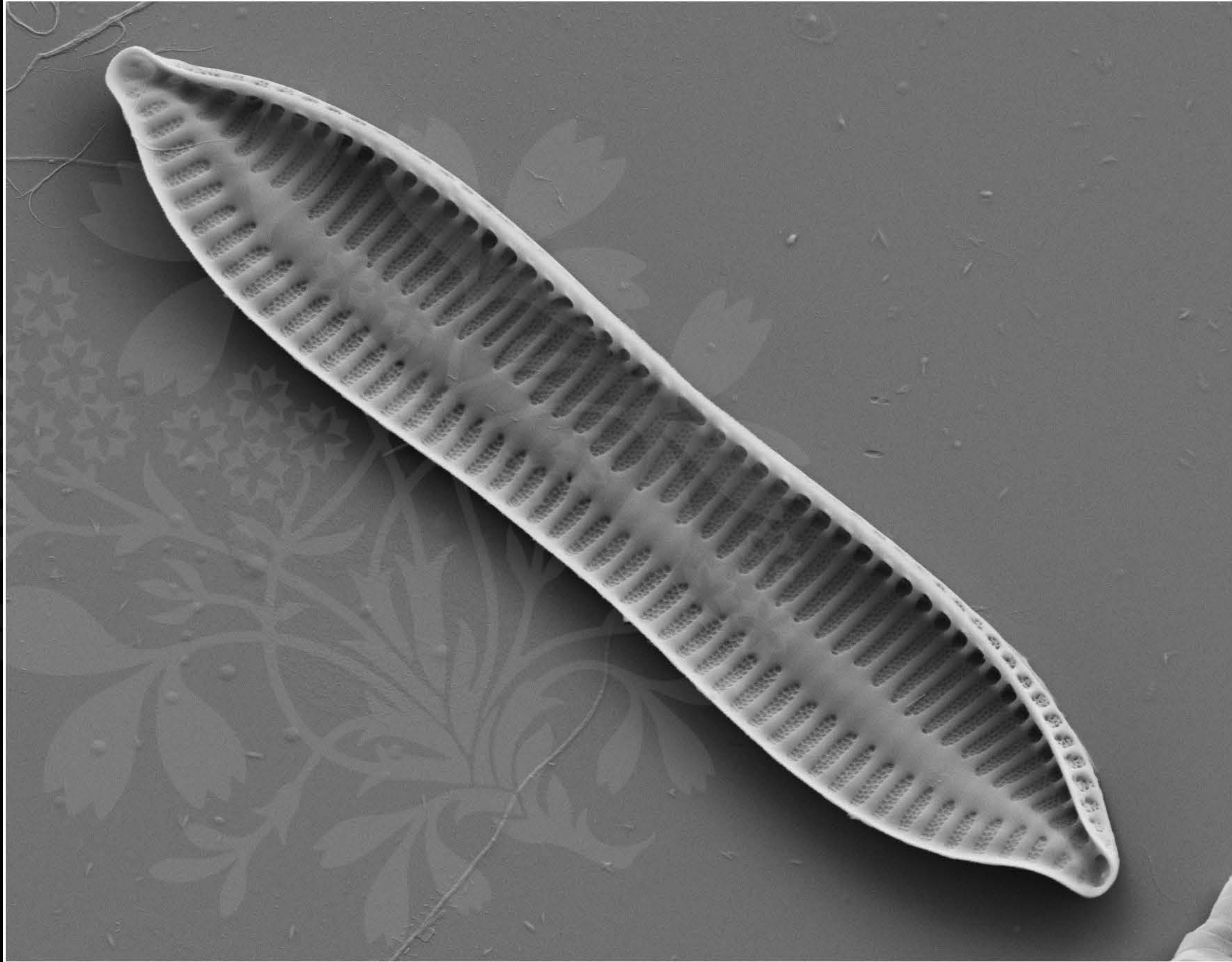
Signal A = SE2

Date :10 Nov 2017

WD = 4.5 mm

File Name = TRY946CAT_01.tif





1 μ m
└───┘

Mag = 7.50 K X

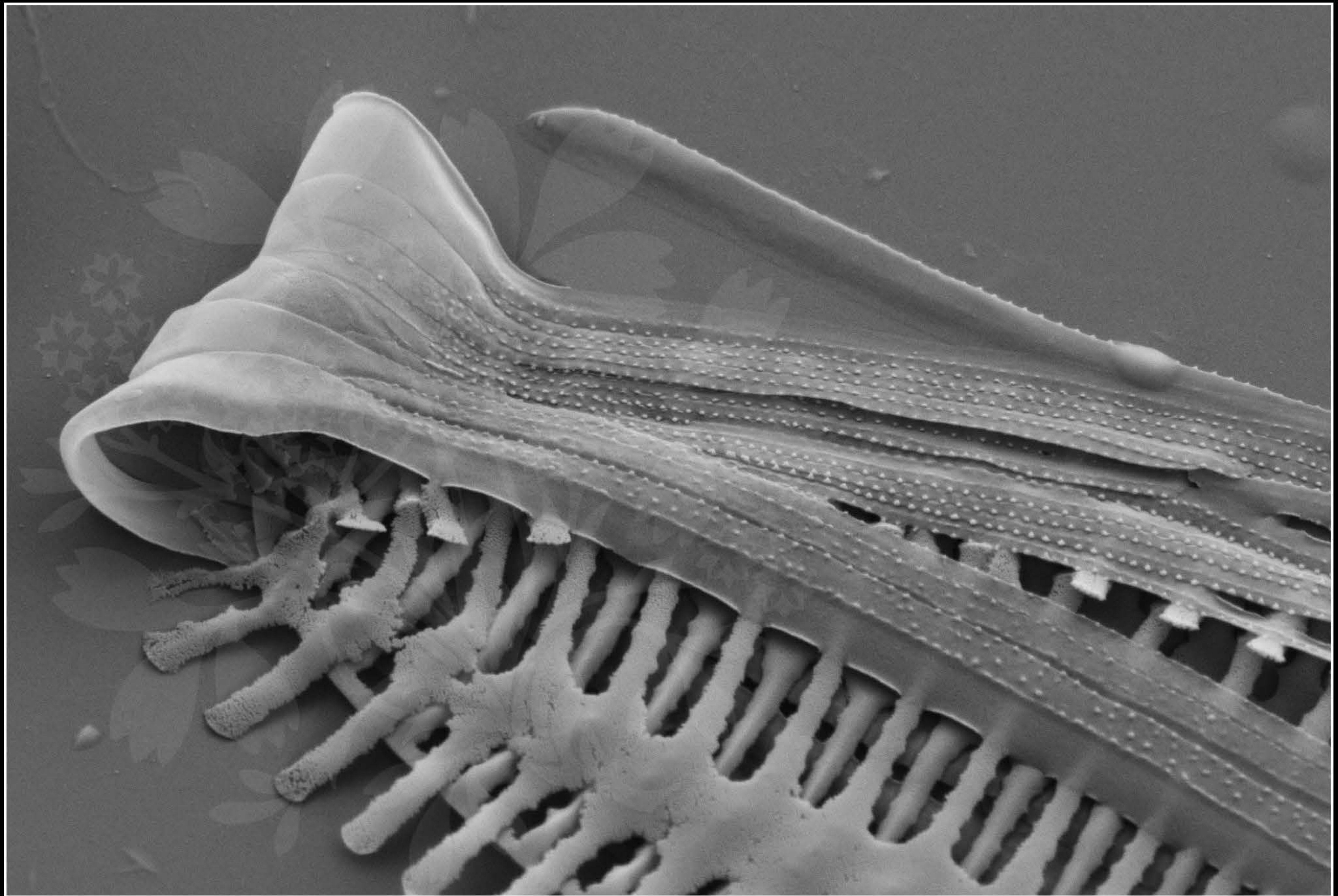
EHT = 5.00 kV

Signal A = SE2 Date :10 Nov 2017

WD = 4.5 mm

File Name = TRY946CAT_02.tif





200 nm
└─┘

Mag = 30.00 K X

EHT = 5.00 kV

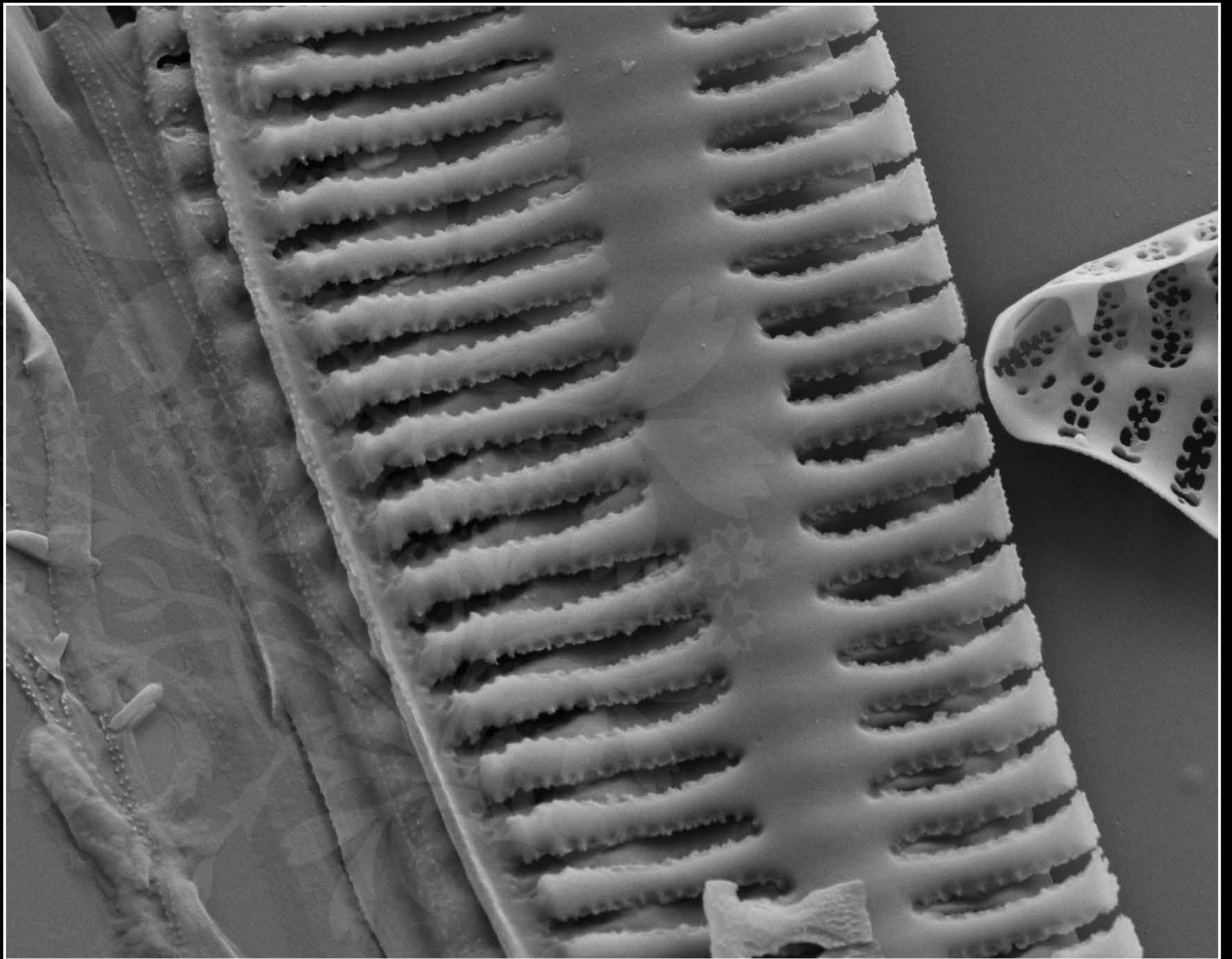
Signal A = SE2

Date : 10 Nov 2017

WD = 4.5 mm

File Name = TRY946CAT_03.tif





1 μm

Mag = 20.00 K X

EHT = 5.00 kV

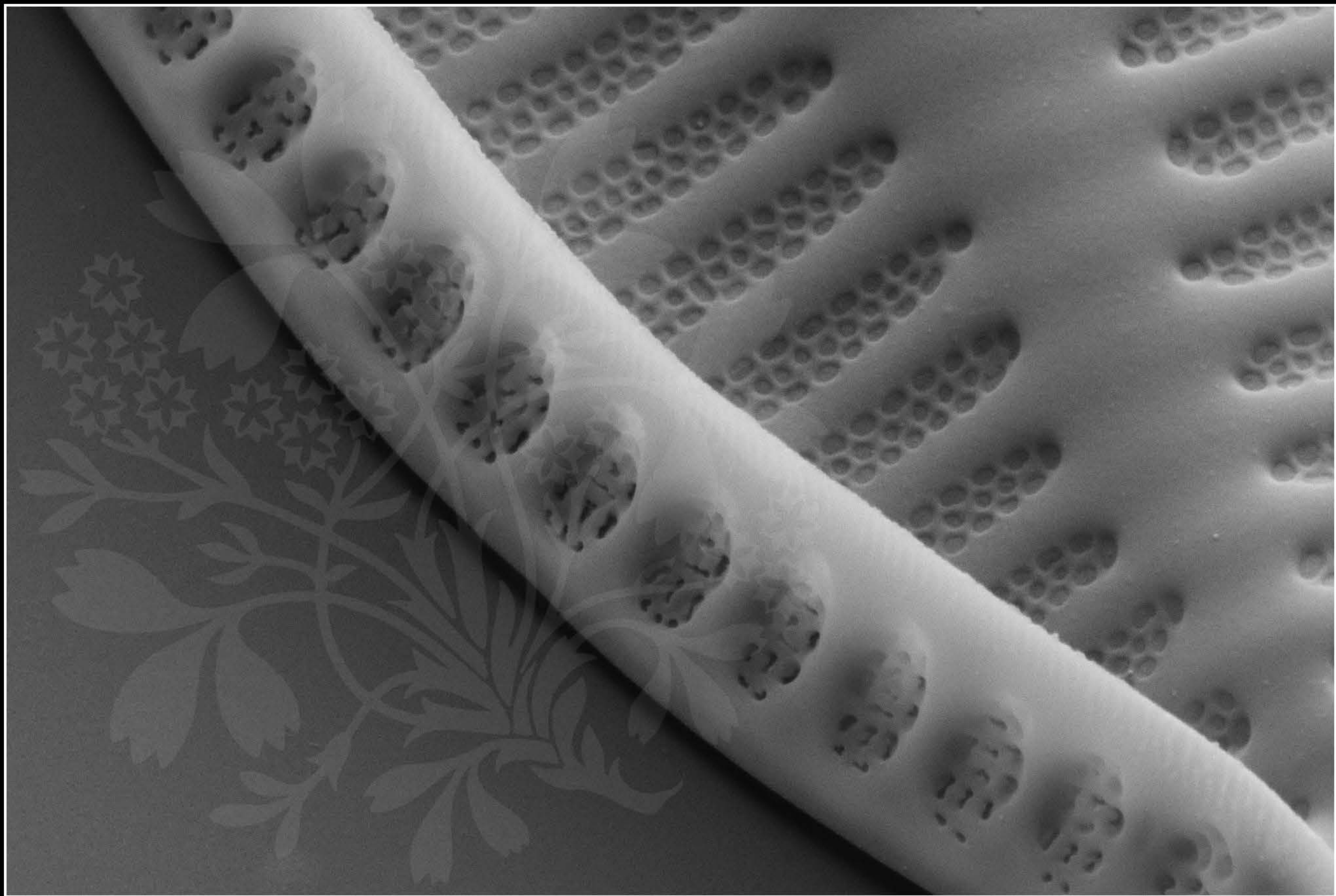
Signal A = SE2

Date :10 Nov 2017

WD = 4.5 mm

File Name = TRY946CAT_04.tif





200 nm
└───┘

Mag = 40.00 K X

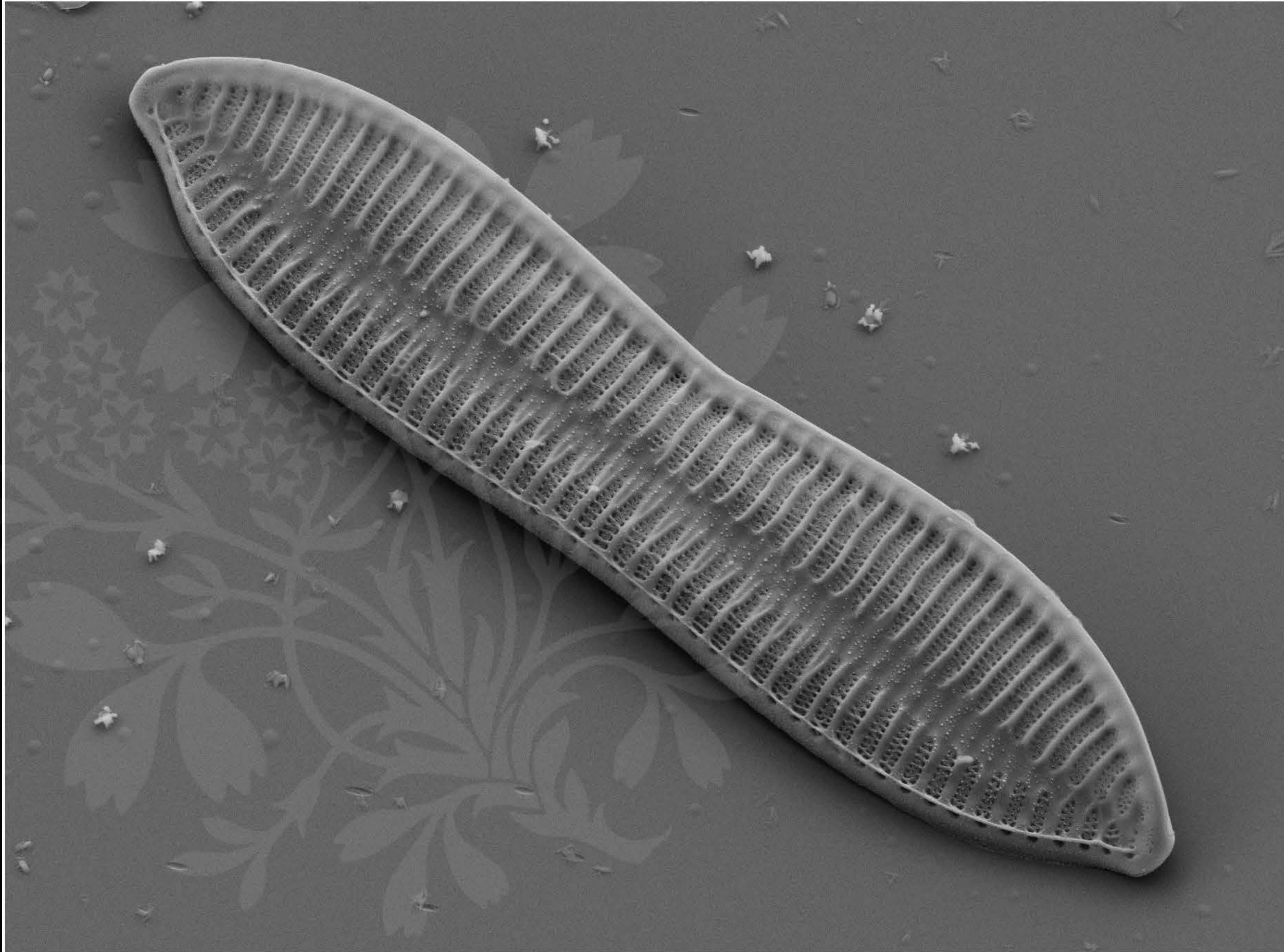
EHT = 5.00 kV

Signal A = SE2 Date :10 Nov 2017

WD = 4.5 mm

File Name = TRY946CAT_05.tif





1 μm

Mag = 7.50 K X

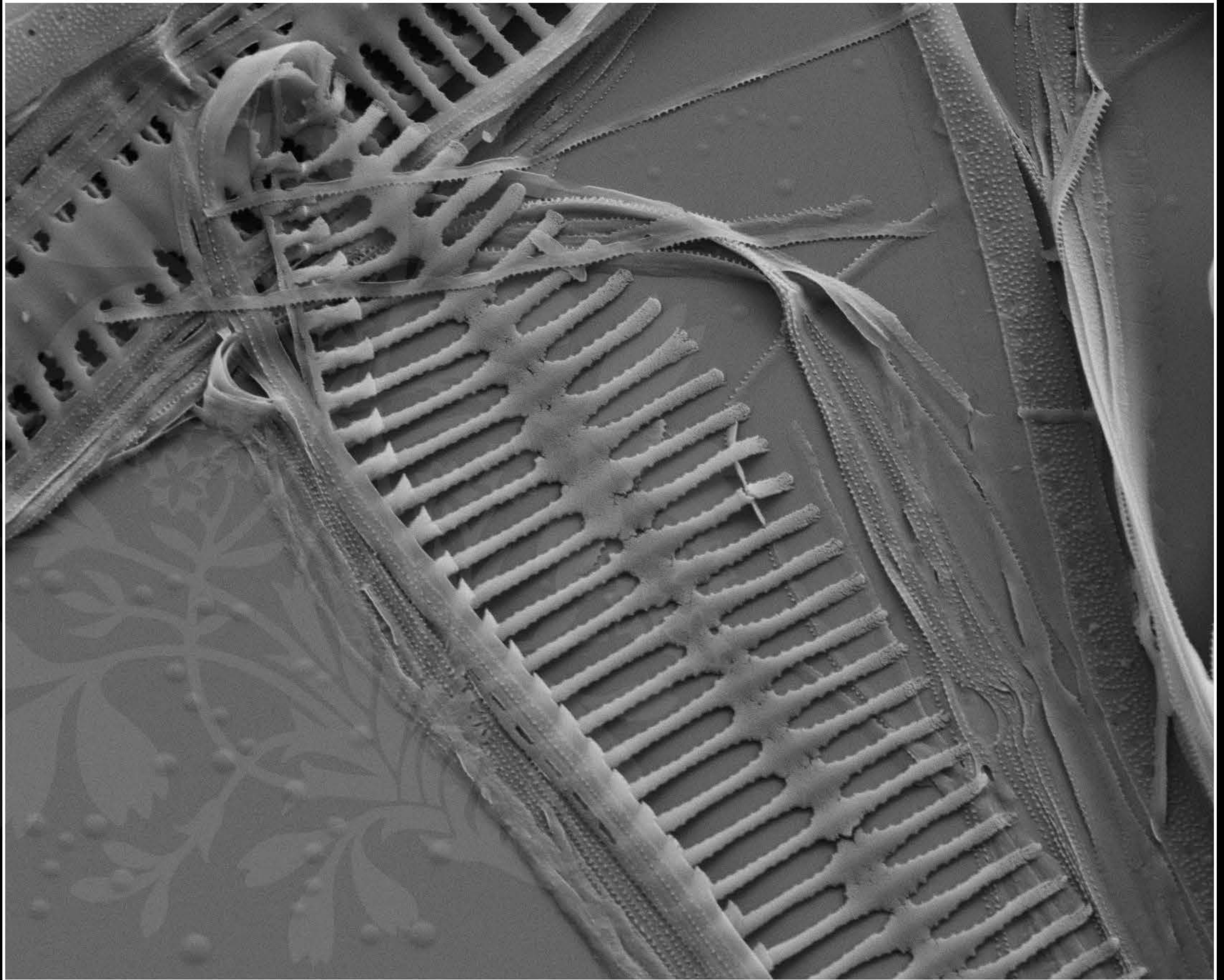
EHT = 5.00 kV

Signal A = SE2 Date :10 Nov 2017

WD = 4.5 mm

File Name = TRY946CAT_06.tif





1 μm

Mag = 12.00 K X

EHT = 5.00 kV

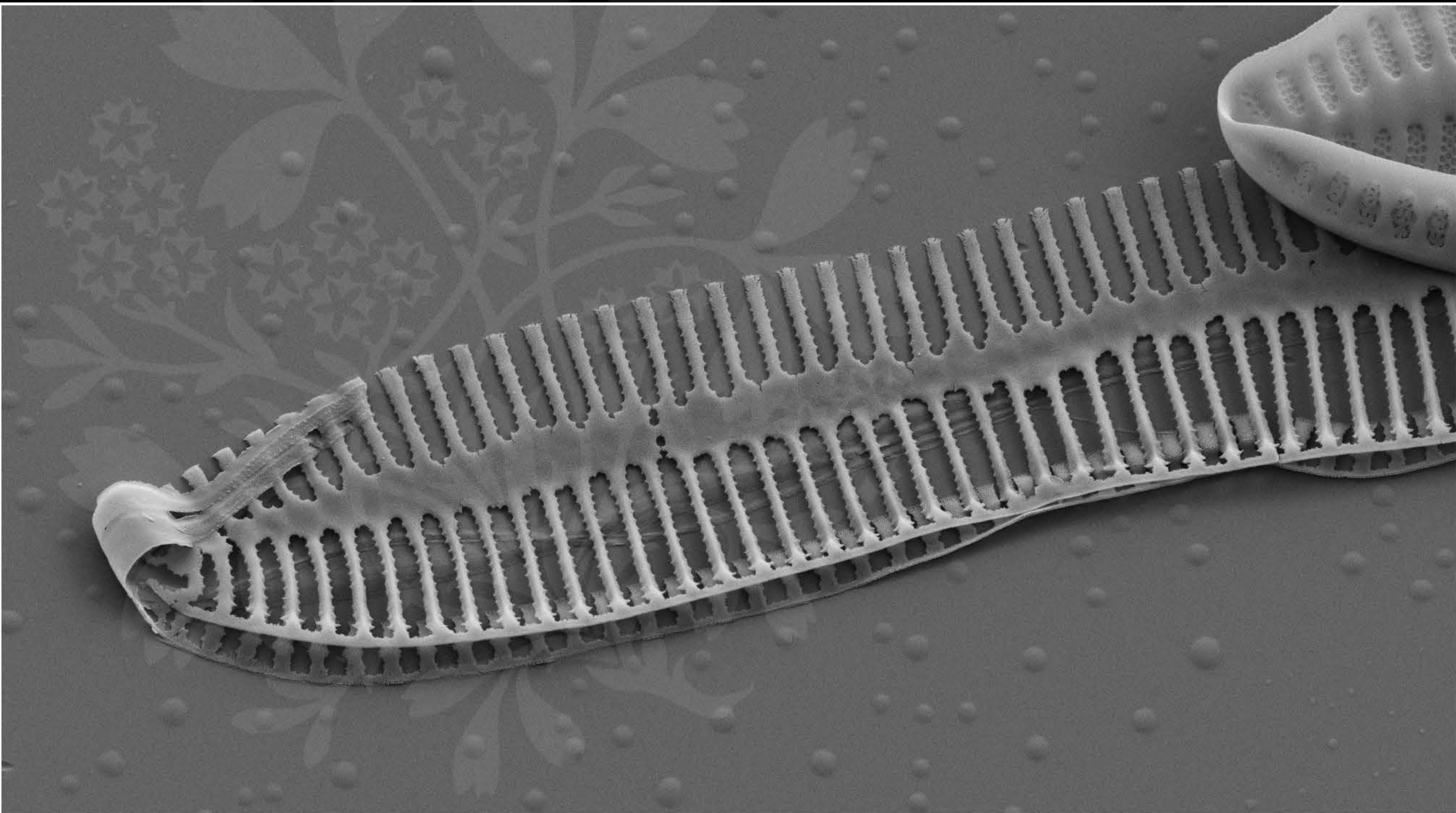
Signal A = SE2

Date :10 Nov 2017

WD = 4.5 mm

File Name = TRY946CAT_07.tif





1 μm

Mag = 10.00 K X

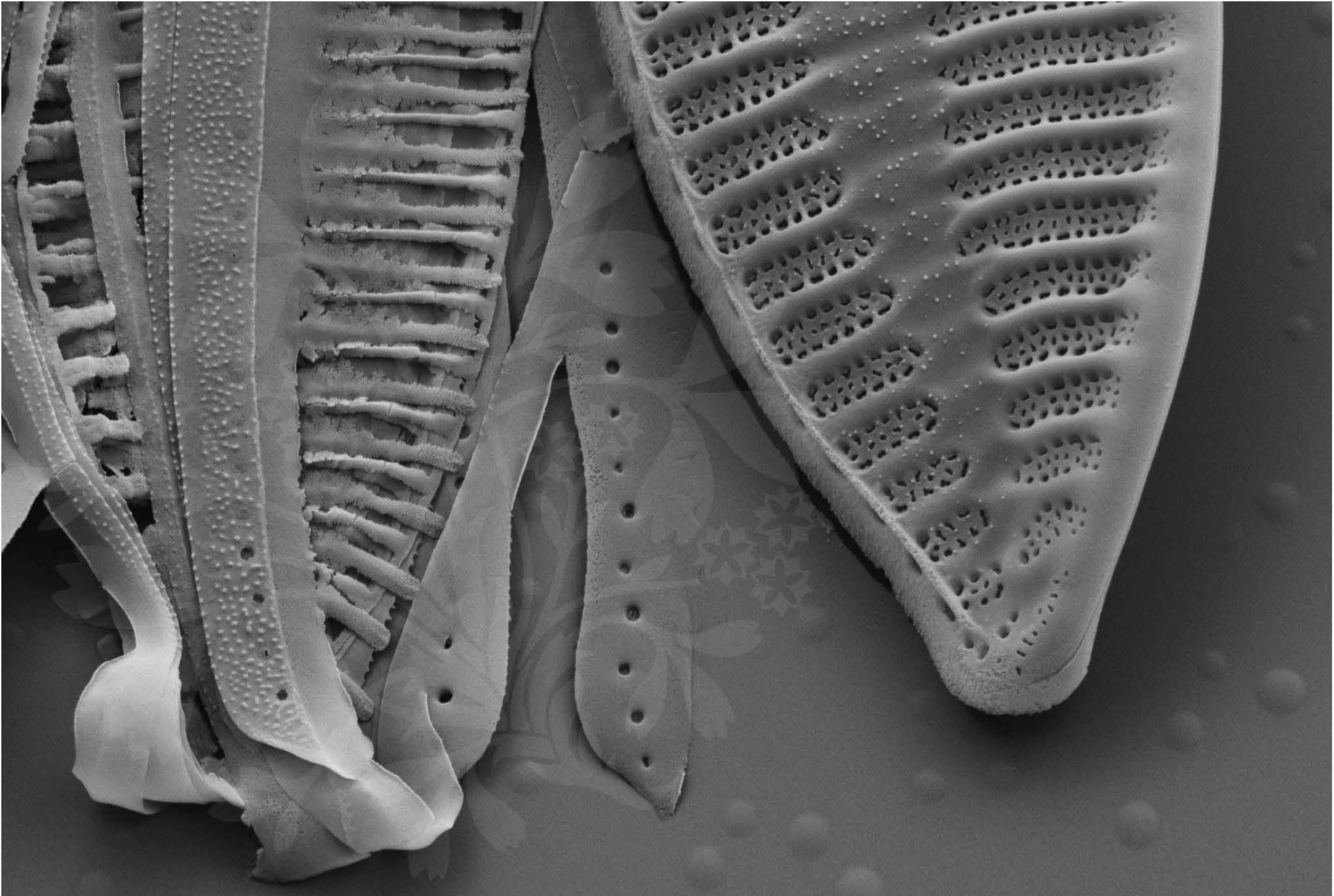
EHT = 5.00 kV

Signal A = SE2 Date :10 Nov 2017

WD = 4.5 mm

File Name = TRY946CAT_08.tif





1 μm

Mag = 20.00 K X

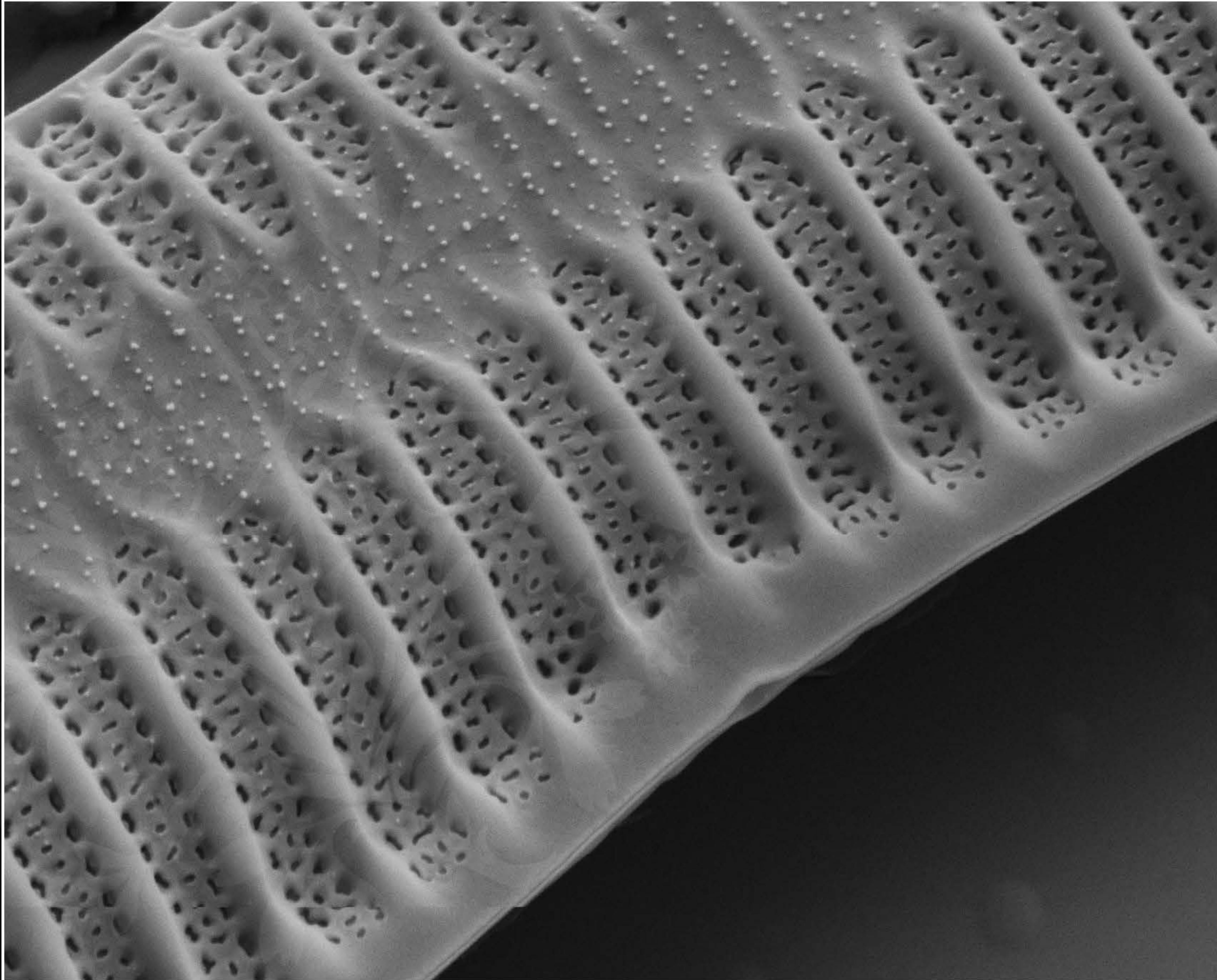
EHT = 5.00 kV

Signal A = SE2 Date :10 Nov 2017

WD = 4.5 mm

File Name = TRY946CAT_09.tif





200 nm
┆

Mag = 30.00 K X

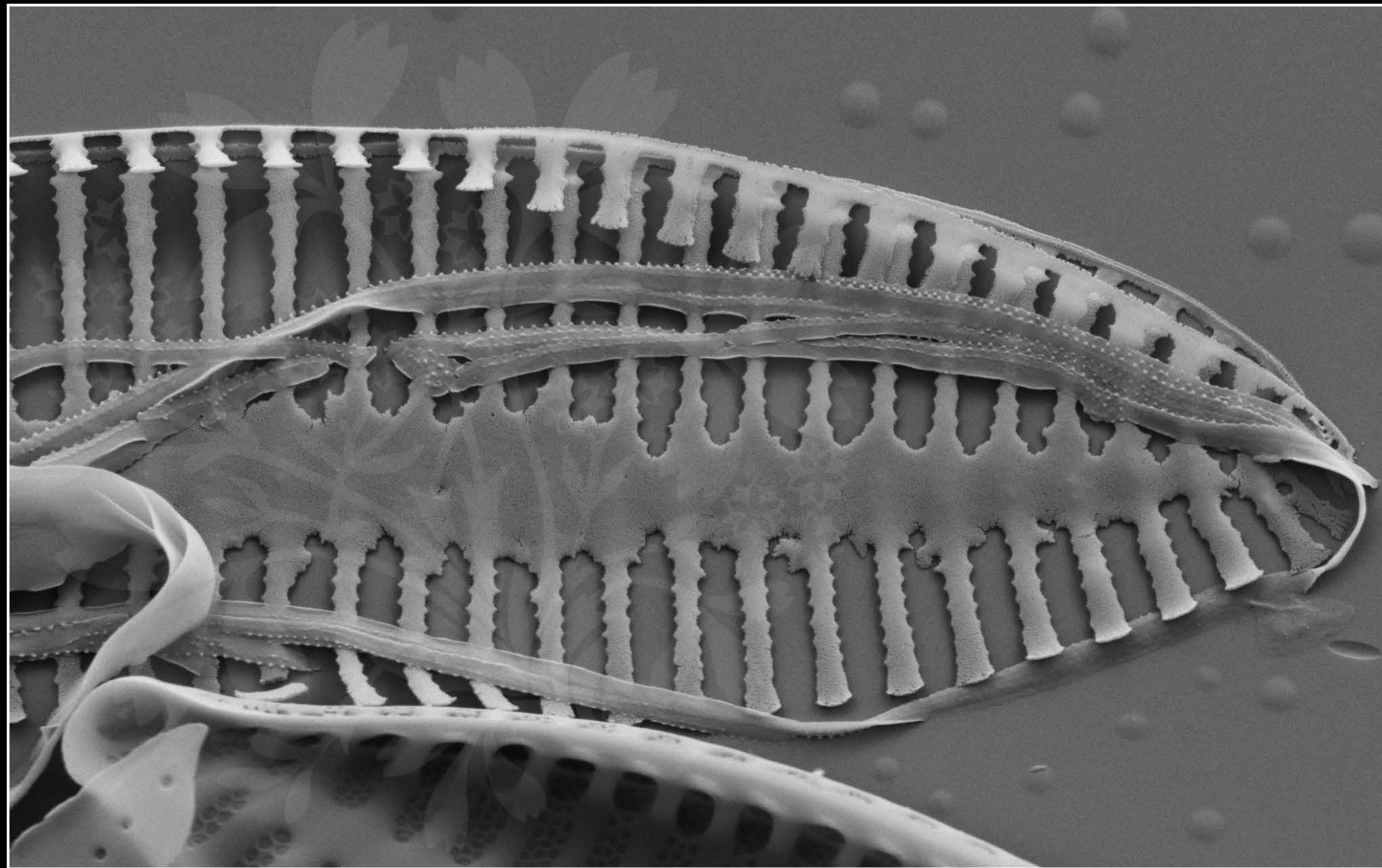
EHT = 5.00 kV

Signal A = SE2 Date :10 Nov 2017

WD = 4.5 mm

File Name = TRY946CAT_10.tif





1 μm

Mag = 20.00 K X

EHT = 5.00 kV

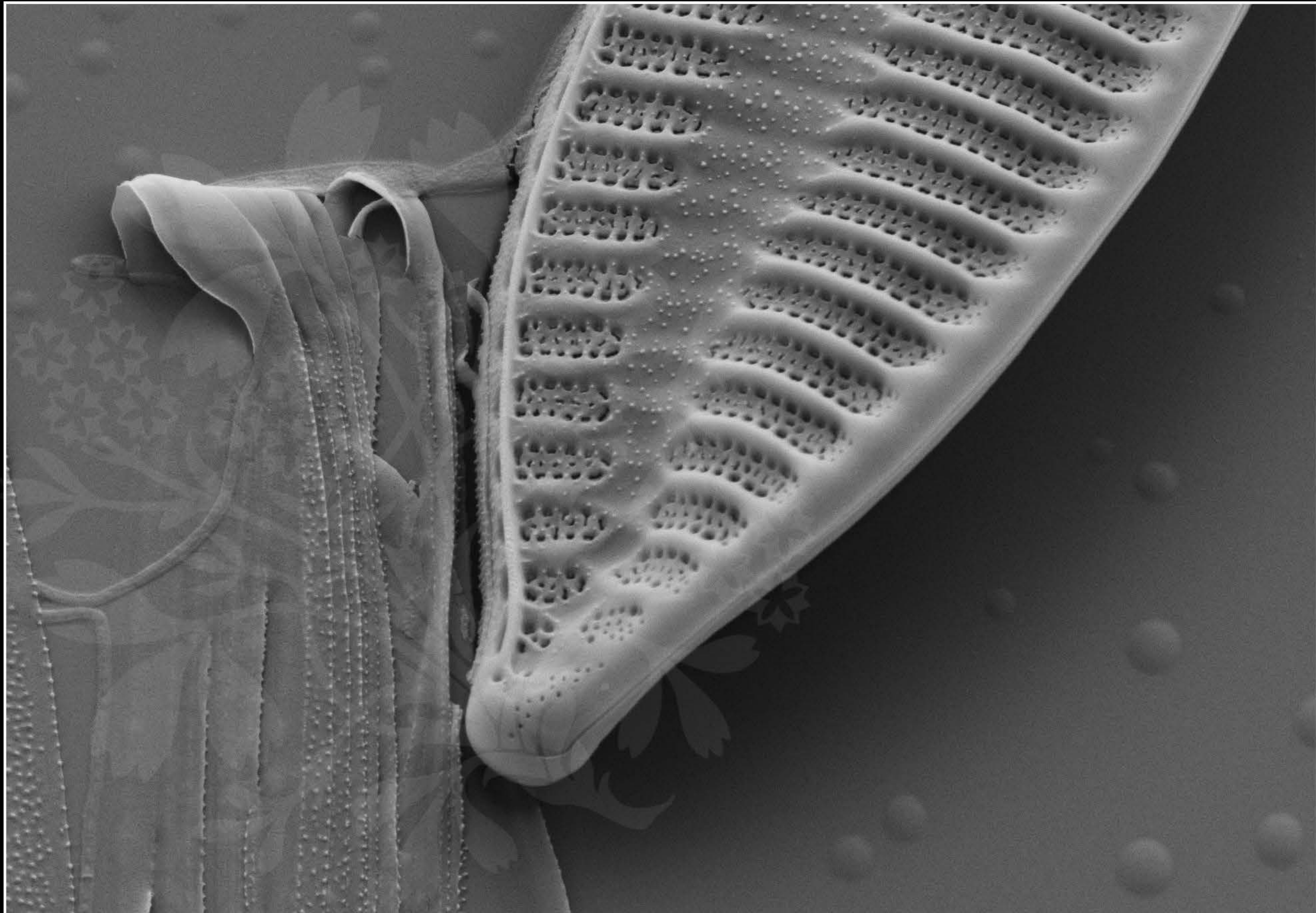
Signal A = SE2

Date :10 Nov 2017

WD = 4.5 mm

File Name = TRY946CAT_11.tif





1 μm

Mag = 20.00 K X

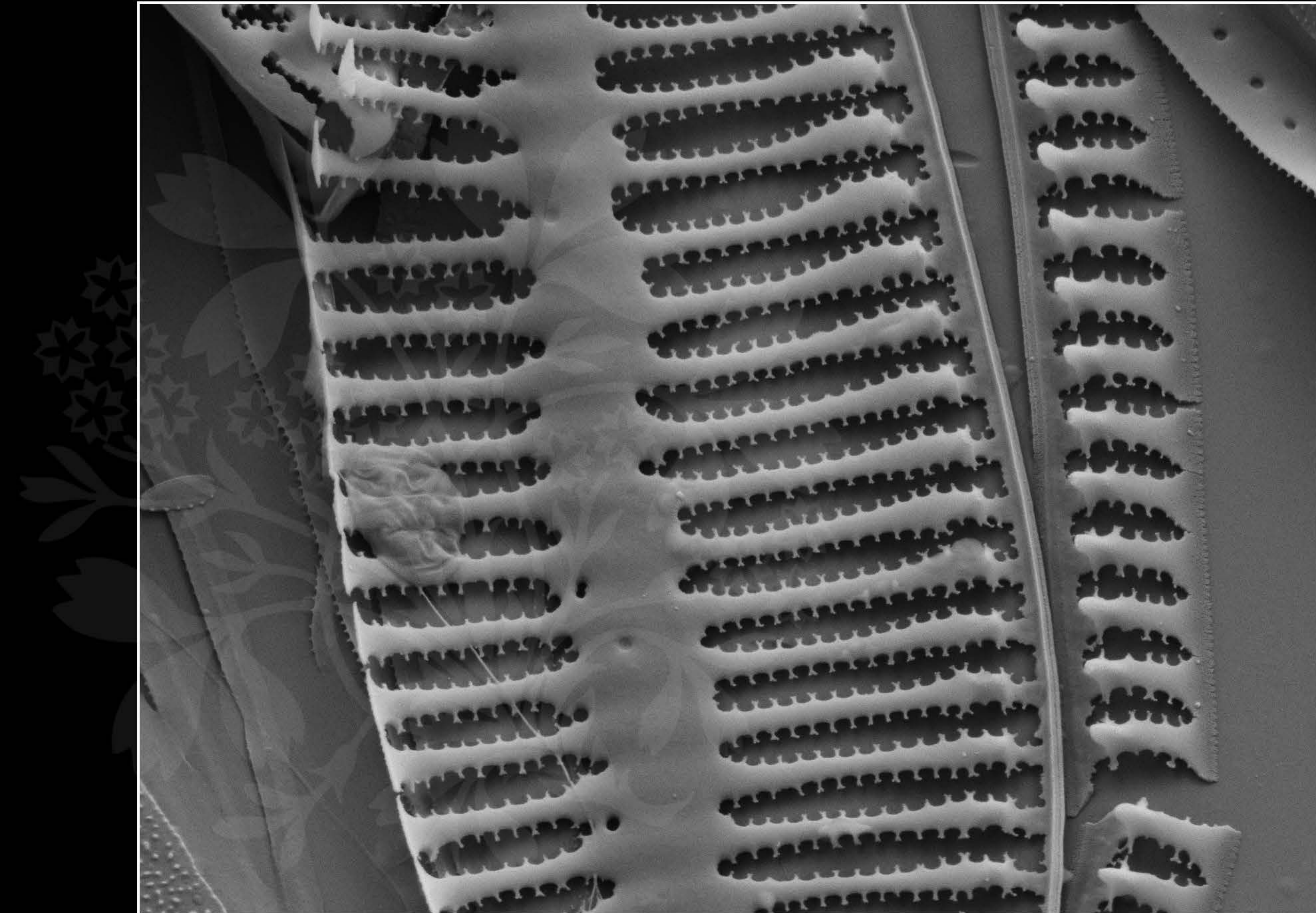
EHT = 5.00 kV

Signal A = SE2 Date :10 Nov 2017

WD = 4.5 mm

File Name = TRY946CAT_12.tif





1 μm

Mag = 20.00 K X

EHT = 5.00 kV

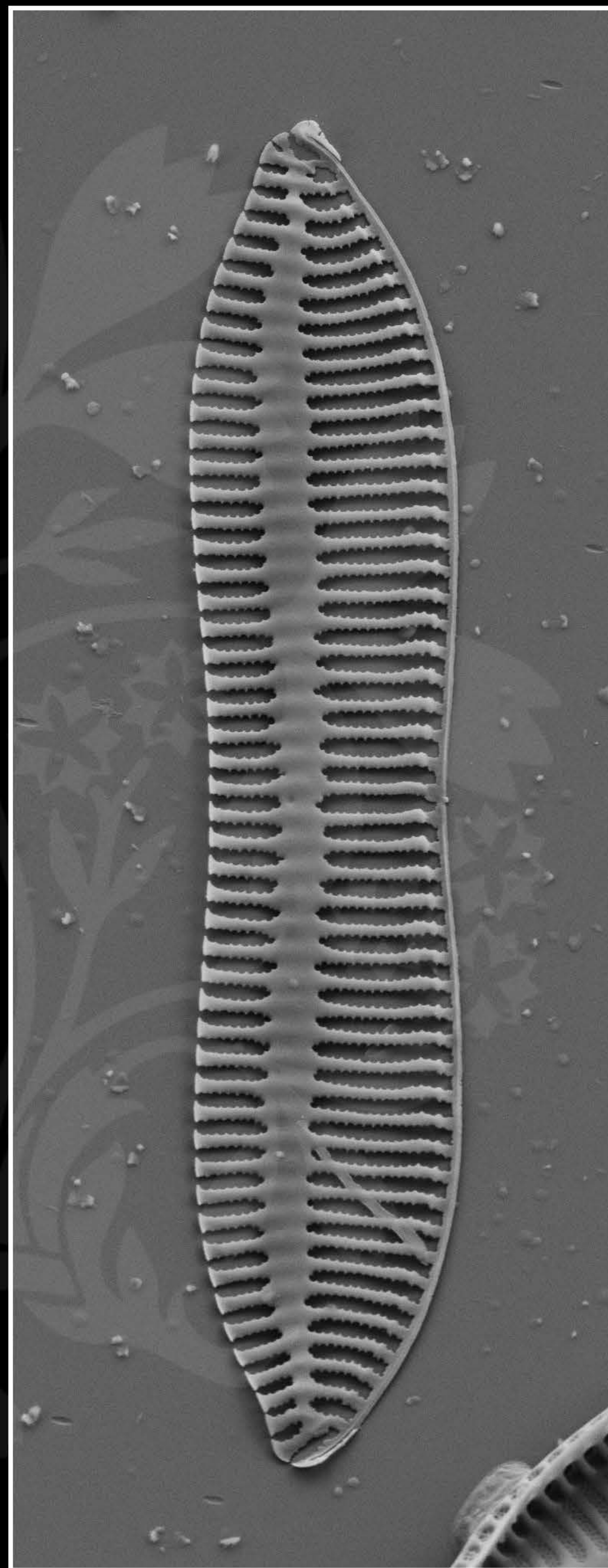
Signal A = SE2

Date : 10 Nov 2017

WD = 4.5 mm

File Name = TRY946CAT_13.tif





2 μ m

Mag = 5.00 K X

EHT = 5.00 kV

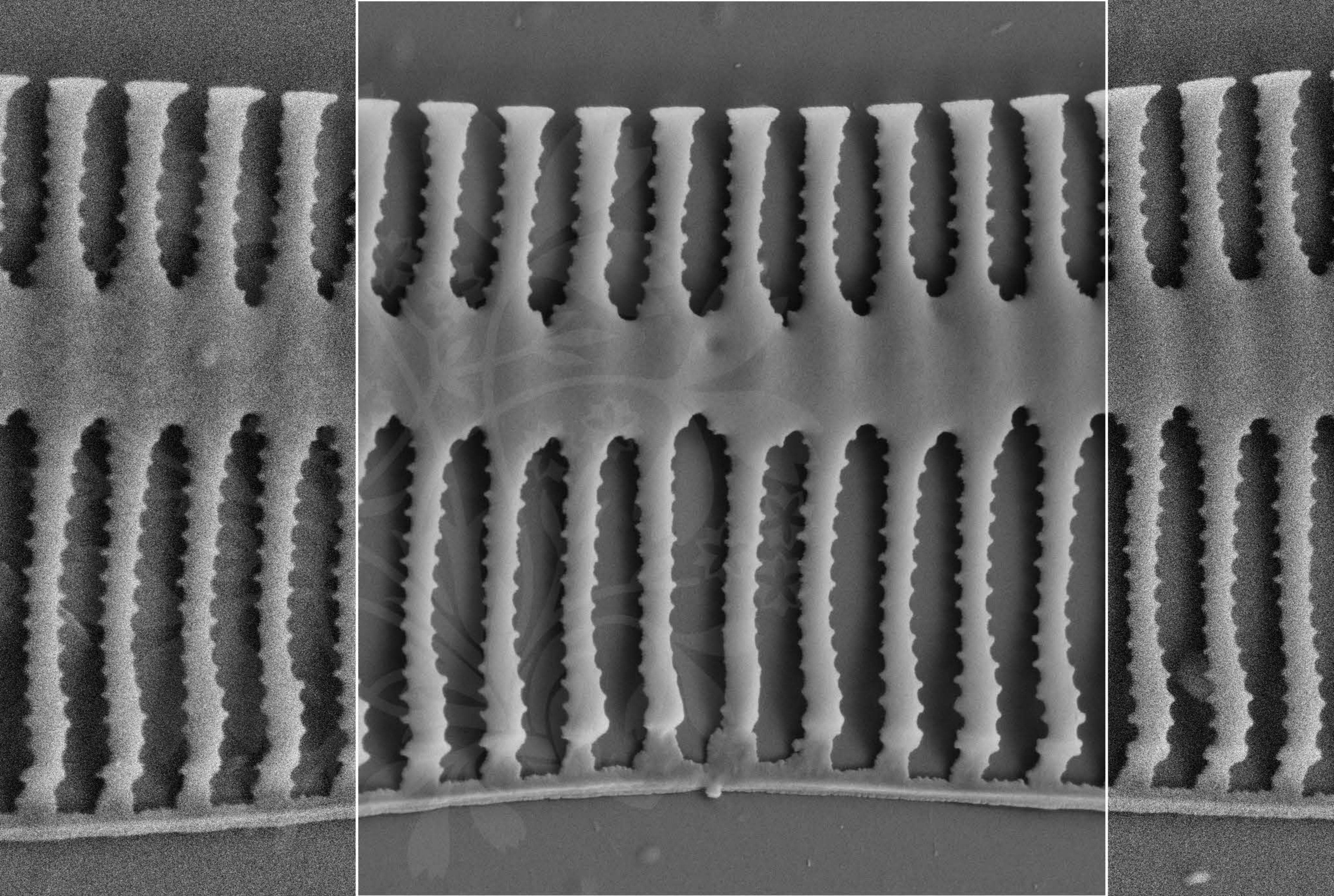
Signal A = SE2

Date :10 Nov 2017

WD = 4.5 mm

File Name = TRY946CAT_14.tif





300 nm
└───┘

Mag = 25.00 K X

EHT = 5.00 kV

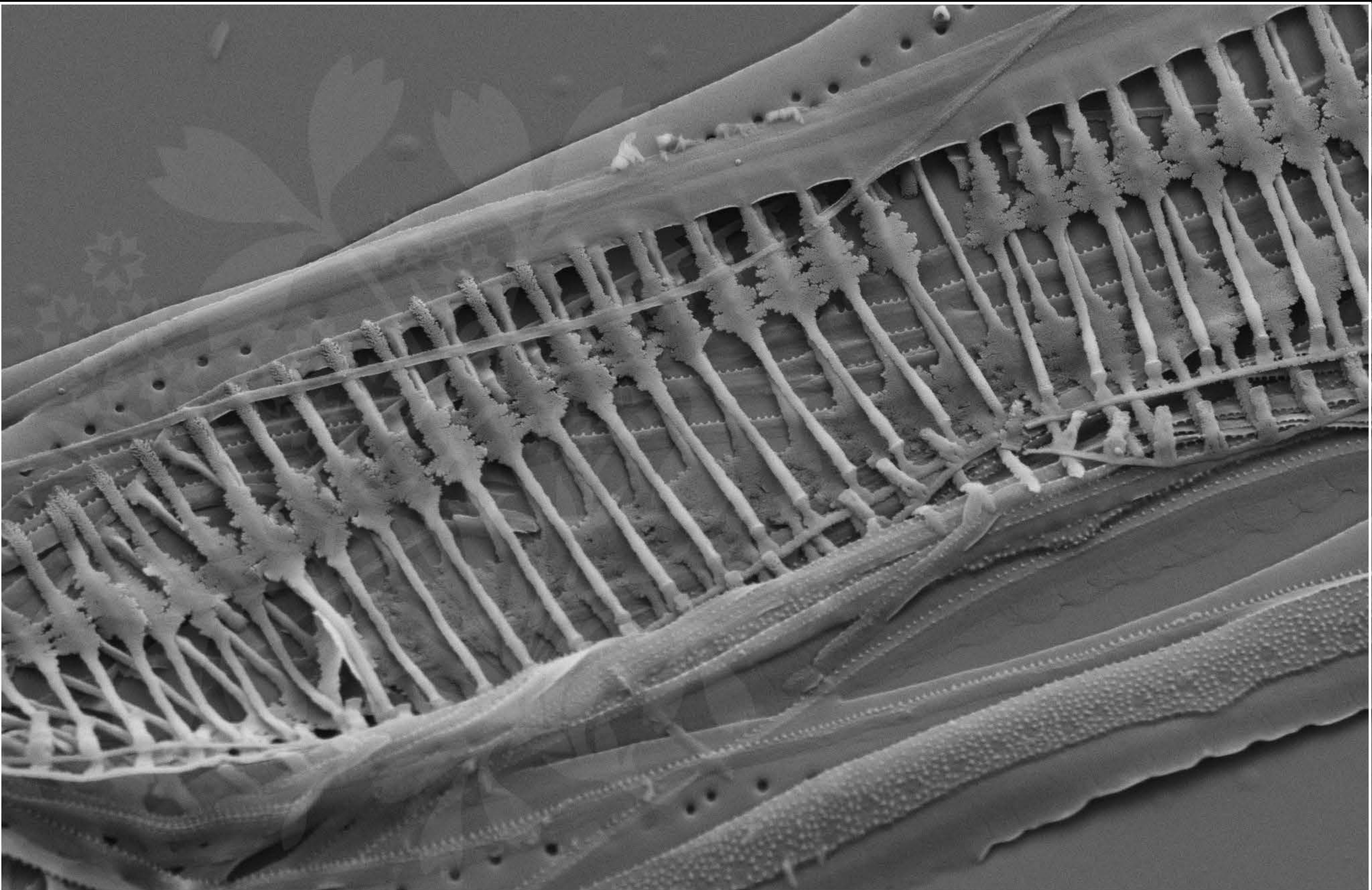
Signal A = SE2

Date : 10 Nov 2017

WD = 4.5 mm

File Name = TRY946CAT_15.tif





1 μm

Mag = 16.00 K X

EHT = 5.00 kV

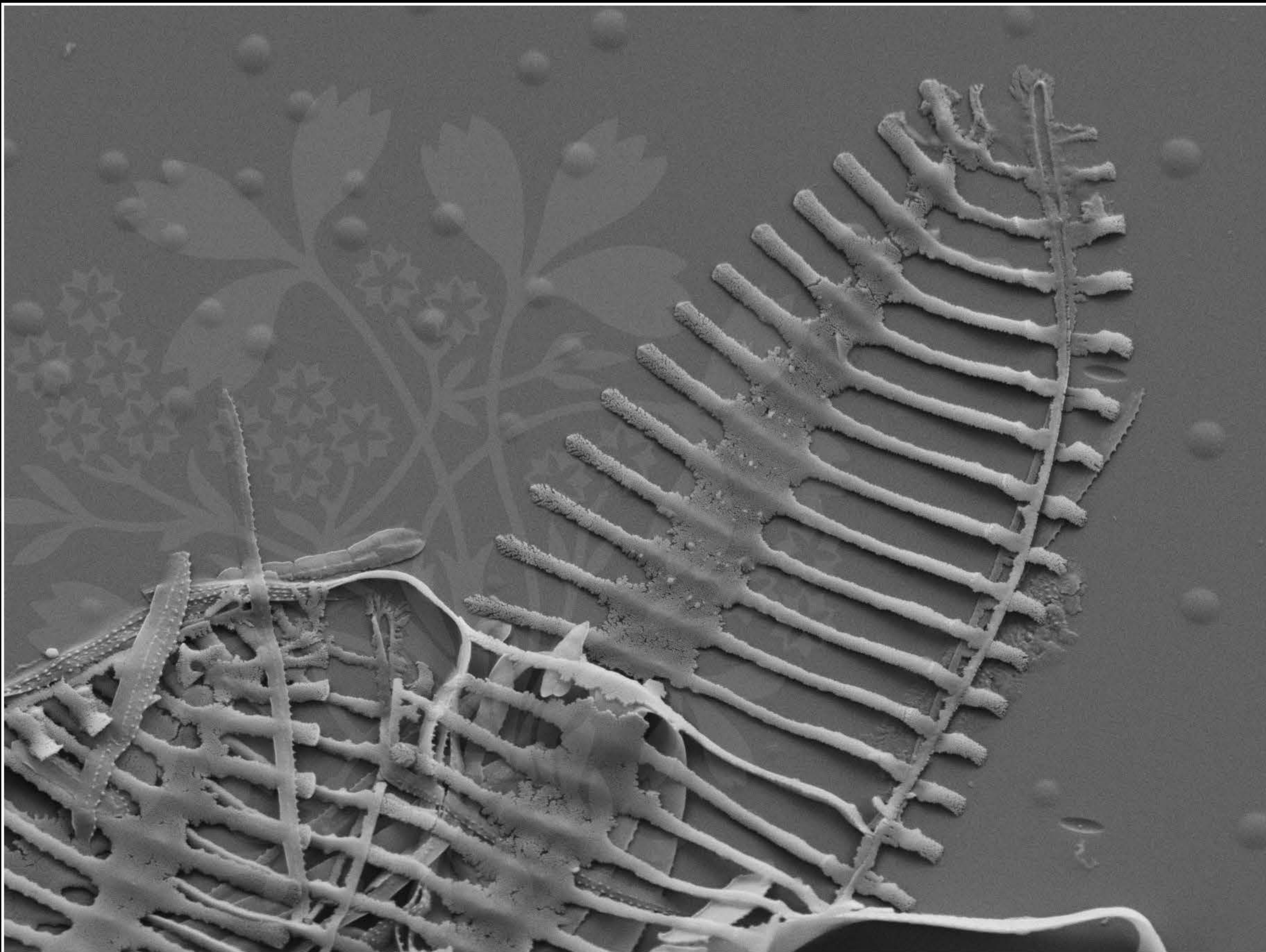
Signal A = SE2

Date : 10 Nov 2017

WD = 4.5 mm

File Name = TRY946CAT_16.tif





1 μ m

Mag = 16.00 K X

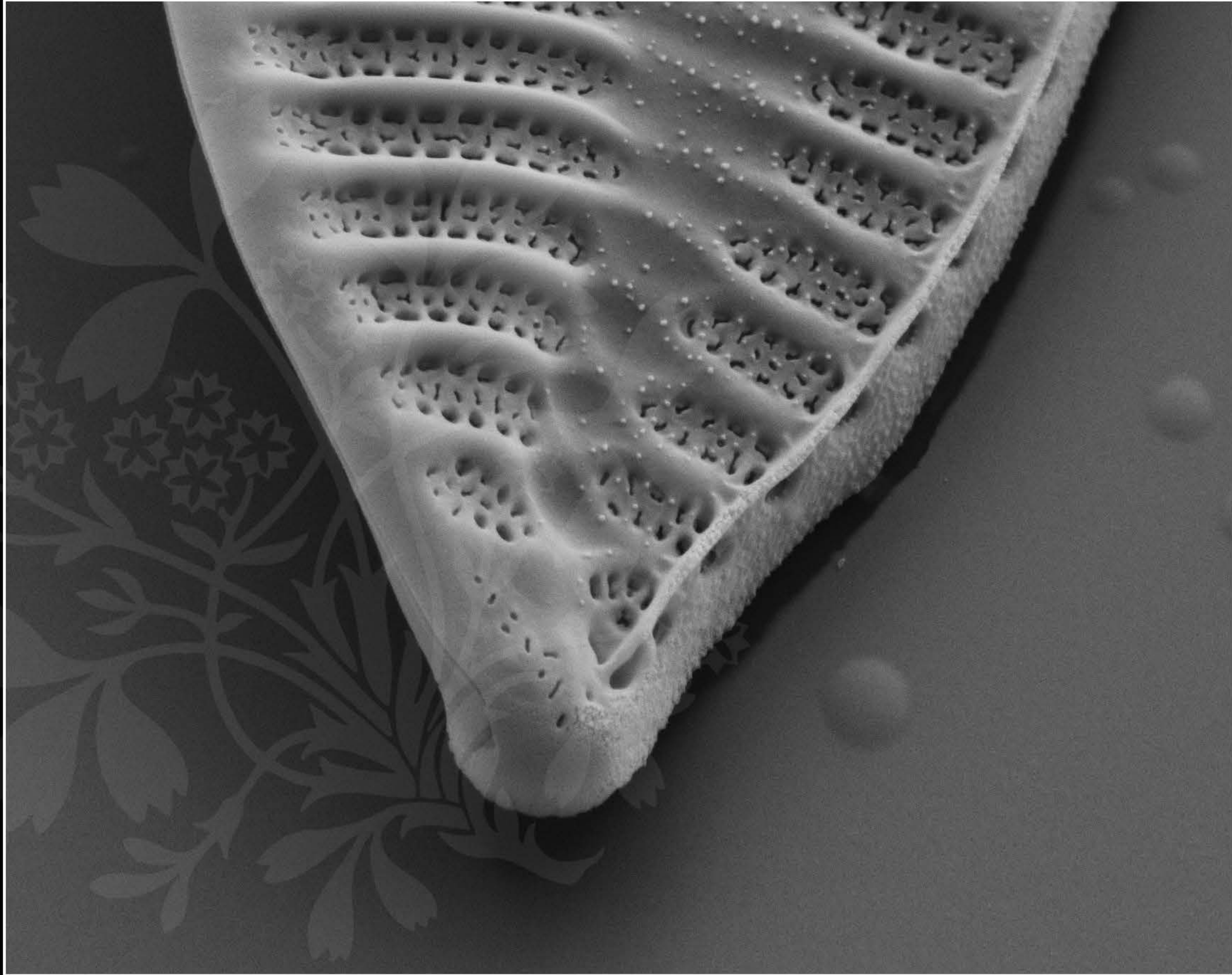
EHT = 5.00 kV

Signal A = SE2 Date :10 Nov 2017

WD = 4.5 mm

File Name = TRY946CAT_17.tif





200 nm
└─┘

Mag = 30.00 K X

EHT = 5.00 kV

Signal A = SE2 Date :10 Nov 2017

WD = 4.5 mm

File Name = TRY946CAT_18.tif

